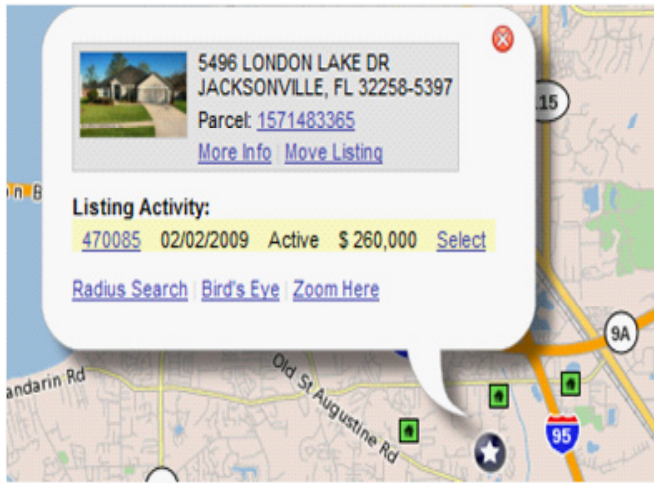
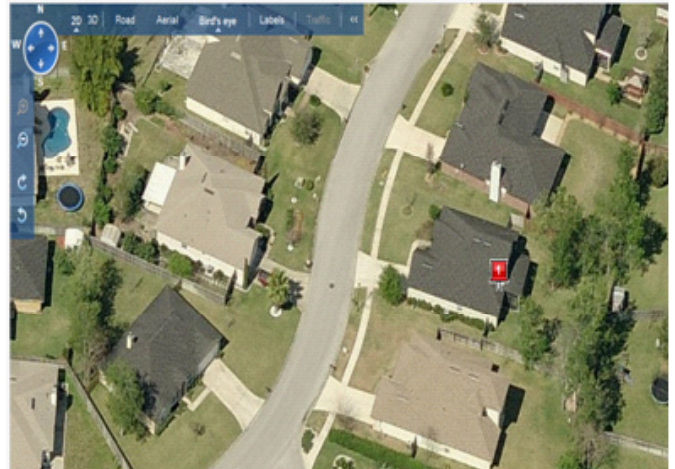


NEW “Birdseye View” Maps on flexmls



You can opt for a 3-D view to get a better sense of the property / house. It includes navigational tools such as the ability to view from any direction (north, south, east, or west) and of course the ability to zoom in and out. The “One Click Directions” is a quick and easy way to obtain directions from the closes major thoroughfare to a specific property.

Now available on the flexmls map is a “Birdseye View” option through www.bing.com. A “Birdseye View” is a high resolution aerial image of the listing/comparable or even neighboring properties. While aerial maps are available on the flexmls maps, The “Birdseye View” offers more than just an overhead picture.



The “Birdseye View” has many other helpful features such as the ability to e-mail a link of the map you are viewing. You can send the link directly to your blog (provided the blog is a MSN blog). And if you have a “Windows Live” account (which can be created for free directly from the maps or www.msn.com), you can save a “collection” of maps. These collections can be shared and copied by others if you choose. The birdseye maps also include a variety of different types of searches such as by business name, owner name, address, and so forth.

Be sure to check out this exciting new feature!
CLICK ON PICTURES TO GO TO LINKS!

3-D view of Stadium